

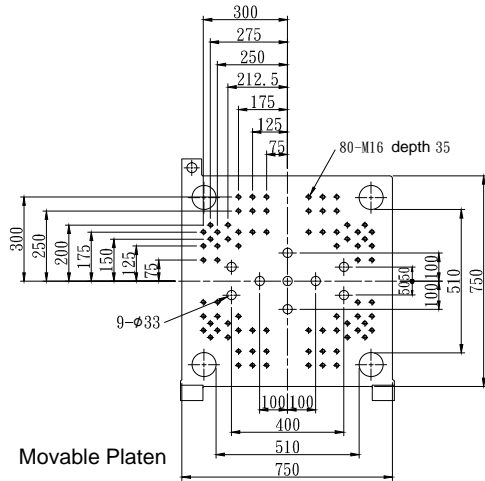
Injection unit													
Type of injection		IU 125				IU 160				IU 200			
Screw diameter	mm	28	32	36	40	32	36	40	46	36	40	46	52
Injection pressure	kg/cm ²	3125	2392	1890	1531	3102	2451	1985	1501	3079	2494	1886	1476
Theoretical shot volume	cm ³	89	116	146	181	129	163	201	266	187	231	306	391
Shot weight (PS)	g	81	105	133	165	117	148	183	242	170	210	278	355
Theoretical injection volume	cm ³ /sec	149	195	247	305	150	190	235	311	146	180	238	304
L/D Ratio	L/D	20	20	20	20	20	20	20	20	20	20	20	20
Plasticizing rate (PS)	kg/hr	50	72	99	132	63	88	117	167	58	78	111	151
Injection stroke	mm	144				160				184			
Max. injection speed	mm/sec	242				187				143			
Screw speed	r.p.m	450				400				265			
Nozzle contact force	ton	5.2				6.2				6.2			
Hopper Capacity	l	50				50				50			
Cylinder Temperature Control	zone	Cylinder ×3 zones . Nozzle ×1 zone								Cylinder ×4 zones Nozzle ×1 zone			
Clamping unit													
Clamping system		Double toggle											
Clamping force	ton	160											
Opening stroke	mm	460											
Overall size of platens (H×V)	mm	750×750											
Distance between tie-bars (H×V)	mm	510×510											
Mould height	mm	220-500											
Max. daylight opening	mm	960											
Ejector system		Hydraulic (9 points)											
Ejection stroke	mm	100											
Ejection force	ton	5.4											
General data													
Pump unit	kw	22											
Heating capacity of screw cylinder	kw	4.1	5.2	6.5	8.1	5	6.4	7.8	10.4	6.1	7.5	10.5	12.3
Total power capacity	kw	26.1	27.2	28.5	30.1	27	28.4	29.8	32.4	28.1	29.5	32.5	34.3
Oil tank capacity	l	304											
Net weight(without oil) approx.	ton	5.8											

E=Energy-Efficient Series

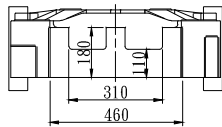
We reserve the right to make changes as a result of further technical advantages

VM 160E

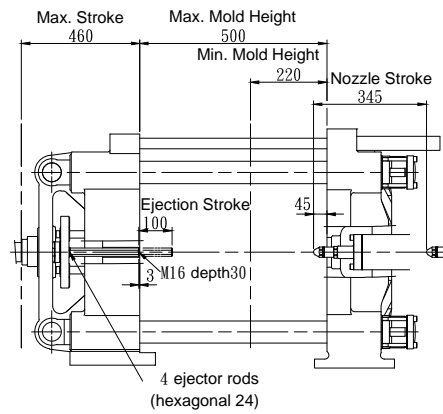
Mold Dimensions Unit : mm



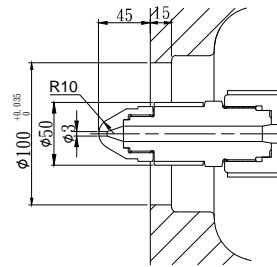
Movable Platen



Hole Pattern for Robot



Mold Dimensions



Nozzle Dimensions

Machine Dimensions Unit : mm

