

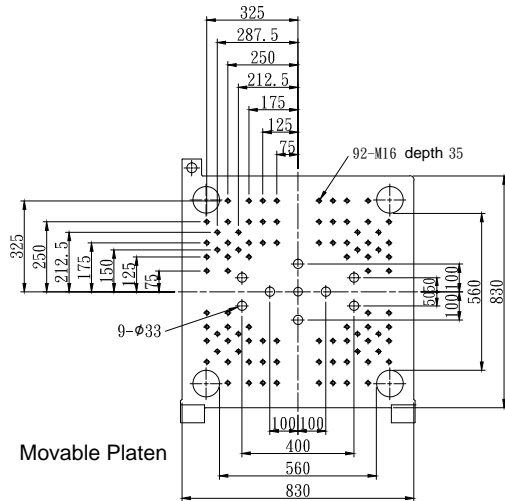
Injection unit													
Type of injection		IU 160				IU 200				IU 260			
Screw diameter	mm	32	36	40	46	36	40	46	52	40	46	52	58
Injection pressure	kg/cm <sup>2</sup>	3102	2451	1985	1501	3079	2494	1886	1476	3062	2316	1812	1457
Theoretical shot volume	cm <sup>3</sup>	129	163	201	266	187	231	306	391	261	346	442	549
Shot weight (PS)	g	117	148	183	242	170	210	278	355	238	314	402	500
Theoretical injection volume	cm <sup>3</sup> /sec	188	238	294	389	189	233	309	395	190	252	322	400
L/D Ratio	L/D	20	20	20	20	20	20	20	20	20	20	20	20
Plasticizing rate (PS)	kg/hr	72	99	132	188	72	97	138	189	97	138	188	265
Injection stroke	mm	160				184				208			
Max. injection speed	mm/sec	234				186				151			
Screw speed	r.p.m	450				330				330			
Nozzle contact force	ton	6.2				6.2				6.2			
Hopper Capacity	l	50				50				50			
Cylinder Temperature Control	zone	Cylinder ×3 zones Nozzle ×1 zone				Cylinder ×4 zones . Nozzle ×1 zone							
Clamping unit													
Clamping system		Double toggle											
Clamping force	ton	200											
Opening stroke	mm	500											
Overall size of platens (H ×V)	mm	830×830											
Distance between tie-bars (H×V)	mm	560×560											
Mould height	mm	220-550											
Max. daylight opening	mm	1050											
Ejector system		Hydraulic (9 points)											
Ejection stroke	mm	125											
Ejection force	ton	5.4											
General data													
Pump unit	kw	25											
Heating capacity of screw cylinder	kw	5	6.4	7.8	10.4	6.1	7.5	10.5	12.3	10.3	11.8	13.2	15.3
Total power capacity	kw	30	31.4	32.8	35.4	31.1	32.5	35.5	37.3	35.3	36.8	38.2	40.3
Oil tank capacity	l	334											
Net weight(without oil) approx.	ton	7.02											

E=Energy-Efficient Series

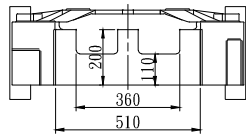
We reserve the right to make changes as a result of further technical advantages

# VM 200E

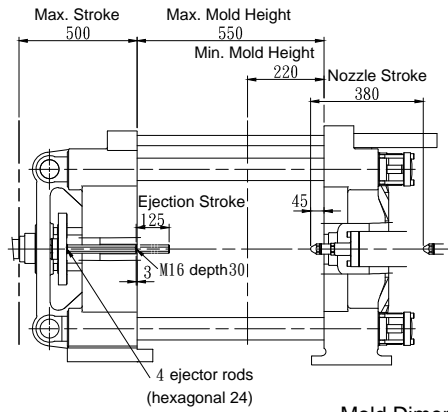
Mold Dimensions Unit : mm



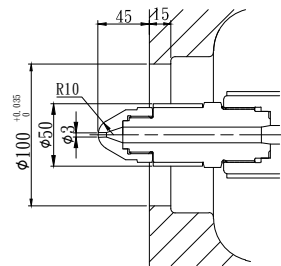
Movable Platen



Hole Pattern for Robot

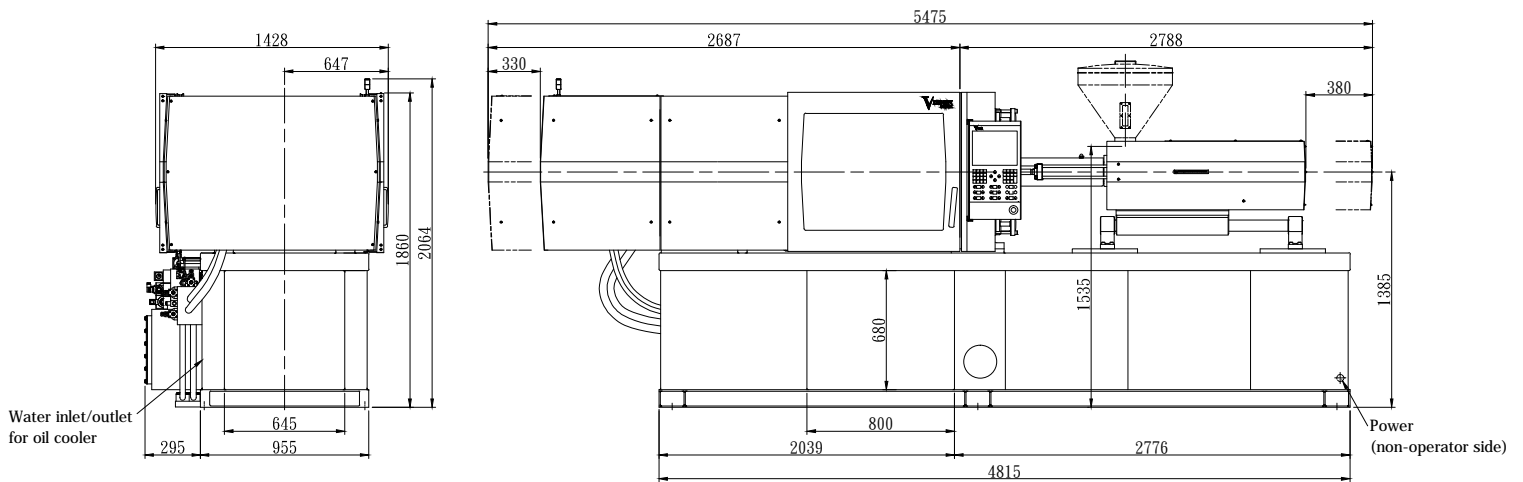


Mold Dimensions



Nozzle Dimensions

Machine Dimensions Unit : mm



Water inlet/outlet for oil cooler

Power (non-operator side)