

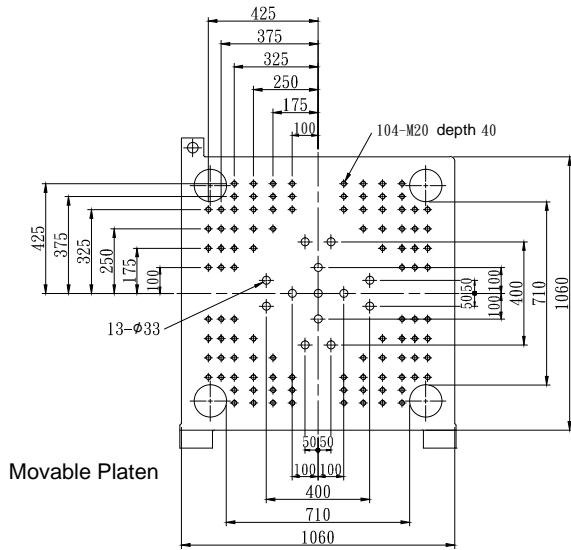
Injection unit									
Type of injection		IU 260				IU 350			
Screw diameter	mm	40	46	52	58	46	52	58	65
Injection pressure	kg/cm ²	3062	2316	1812	1457	3175	2485	1998	1591
Theoretical shot volume	cm ³	261	346	442	549	386	493	613	770
Shot weight (PS)	g	238	314	402	500	351	448	558	700
Theoretical injection volume	cm ³ /sec	238	315	402	500	230	293	365	458
L/D Ratio	L/D	20	20	20	20	20	20	20	20
Plasticizing rate (PS)	kg/hr	117	167	229	323	130	177	250	314
Injection stroke	mm	208				232			
Max. injection speed	mm/sec	189				138			
Screw speed	r.p.m	400				310			
Nozzle contact force	ton	6.2				10.7			
Hopper Capacity	l	100				100			
Cylinder Temperature Control	zone	Cylinder x4 zones . Nozzle x1 zone							
Clamping unit									
Clamping system		Double toggle							
Clamping force	ton	350							
Opening stroke	mm	665							
Overall size of platens (H xV)	mm	1060x1060							
Distance between tie-bars (HxV)	mm	710x710							
Mould height	mm	300-650							
Max. daylight opening	mm	1315							
Ejector system		Hydraulic (13 points)							
Ejection stroke	mm	150							
Ejection force	ton	7.7							
General data									
Pump unit	kw	33							
Heating capacity of screw cylinder	kw	10.3	11.8	13.2	15.3	12.8	16.8	17	18
Total power capacity	kw	43.3	44.8	46.2	48.3	45.8	49.8	50	51
Oil tank capacity	l	465							
Net weight(without oil) approx.	ton	13.9							

E=Energy-Efficient Series

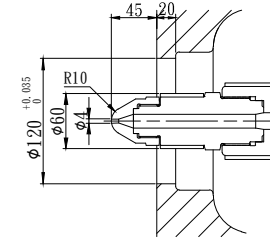
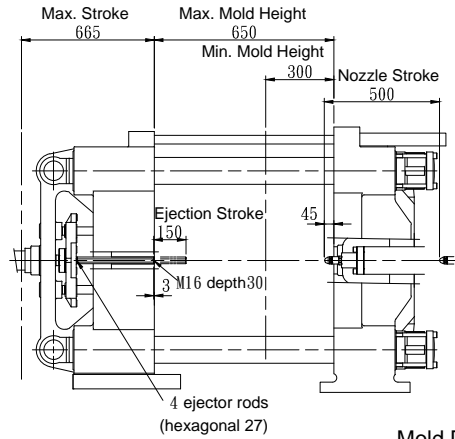
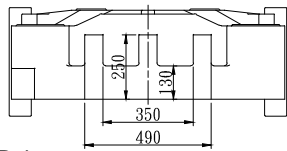
We reserve the right to make changes as a result of further technical advantages

VM 350E

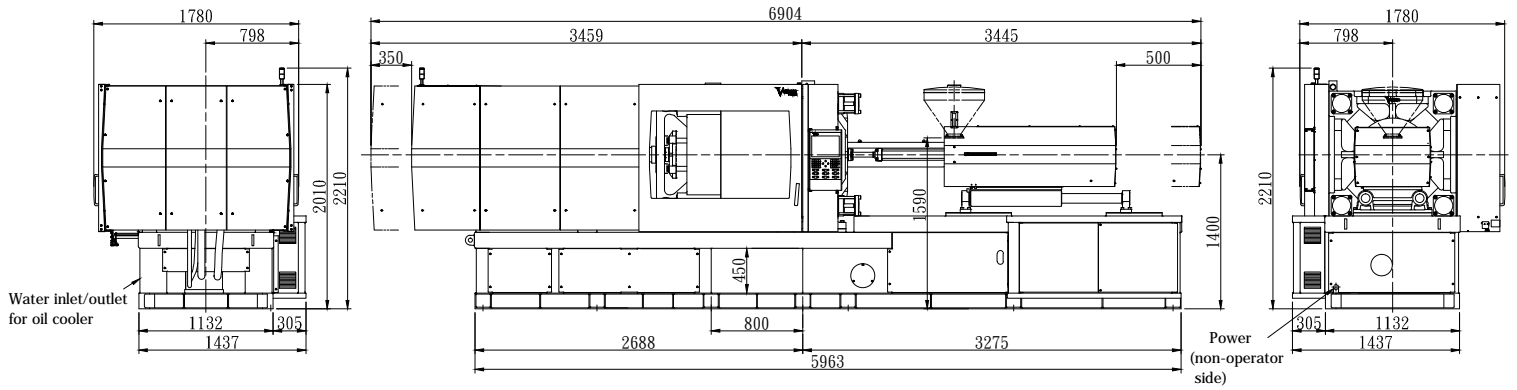
Mold Dimensions Unit : mm



Hole Pattern for Robot



Machine Dimensions Unit : mm



Water inlet/outlet for oil cooler

Power (non-operator side)