

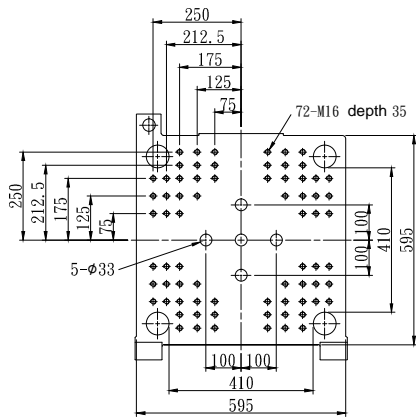
Injection unit												
Type of injection	IU 60			IU 90				IU 125				
Screw diameter	mm	20	22	25	25	28	32	36	28	32	36	40
Injection pressure	kg/cm ²	3011	2488	1927	3150	2511	1923	1519	3125	2392	1890	1531
Theoretical shot volume	cm ³	31	38	49	63	79	103	130	89	116	146	181
Shot weight (PS)	g	28	35	45	57	72	94	118	81	105	133	165
Theoretical injection volume	cm ³ /sec	97	117	151	89	112	146	184	90	117	147	183
L/D Ratio	L/D	20	20	20	20	20	20	20	20	20	20	20
Plasticizing rate (PS)	kg/hr	22	26	37	32	44	64	88	35	51	70	94
Injection stroke	mm	100			128				144			
Max. injection speed	mm/sec	309			181				146			
Screw speed	r.p.m	450			400				320			
Nozzle contact force	ton	5.2			5.2				5.2			
Hopper Capacity	l	25			50				50			
Cylinder Temperature Control	zone	Cylinder ×3 zones . Nozzle ×1 zone										
Clamping unit												
Clamping system	Double toggle											
Clamping force	ton	90										
Opening stroke	mm	360										
Overall size of platens (H ×V)	mm	595×595										
Distance between tie-bars (H×V)	mm	410×410										
Mould height	mm	180~380										
Max. daylight opening	mm	740										
Ejector system	Hydraulic (5 points)											
Ejection stroke	mm	90										
Ejection force	ton	3.4										
General data												
Pump unit	kw	16										
Heating capacity of screw cylinder	kw	3.1	3.5	3.9	3.5	4.5	5.7	6.8	4.1	5.2	6.5	8.1
Total power capacity	kw	19.1	19.5	19.9	19.5	20.5	21.7	22.8	20.1	21.2	22.5	24.1
Oil tank capacity	l	190										
Net weight(without oil) approx.	ton	3.55										

E=Energy-Efficient Series

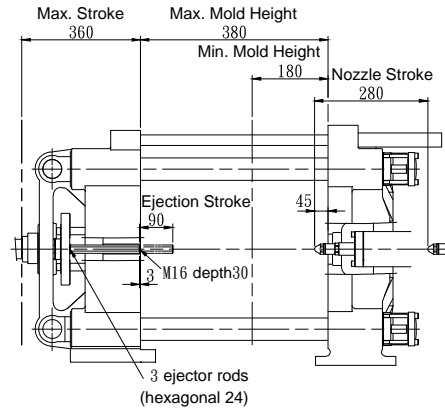
We reserve the right to make changes as a result of further technical advantages

VM 90E

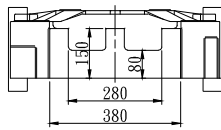
Mold Dimensions Unit : mm



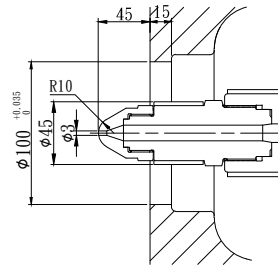
Movable Platen



Mold Dimensions



Hole Pattern for Robot



Nozzle Dimensions

Machine Dimensions Unit : mm

